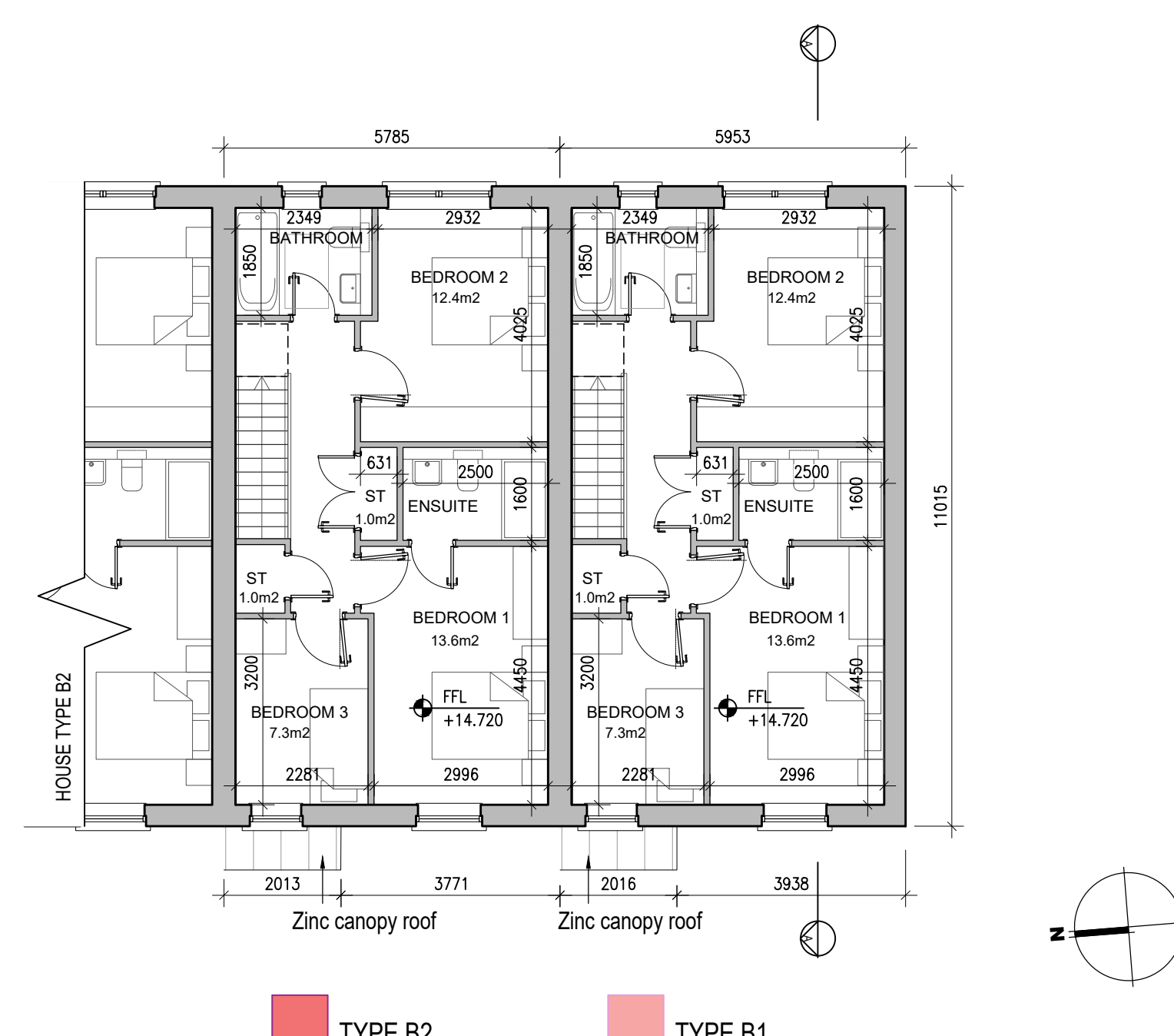
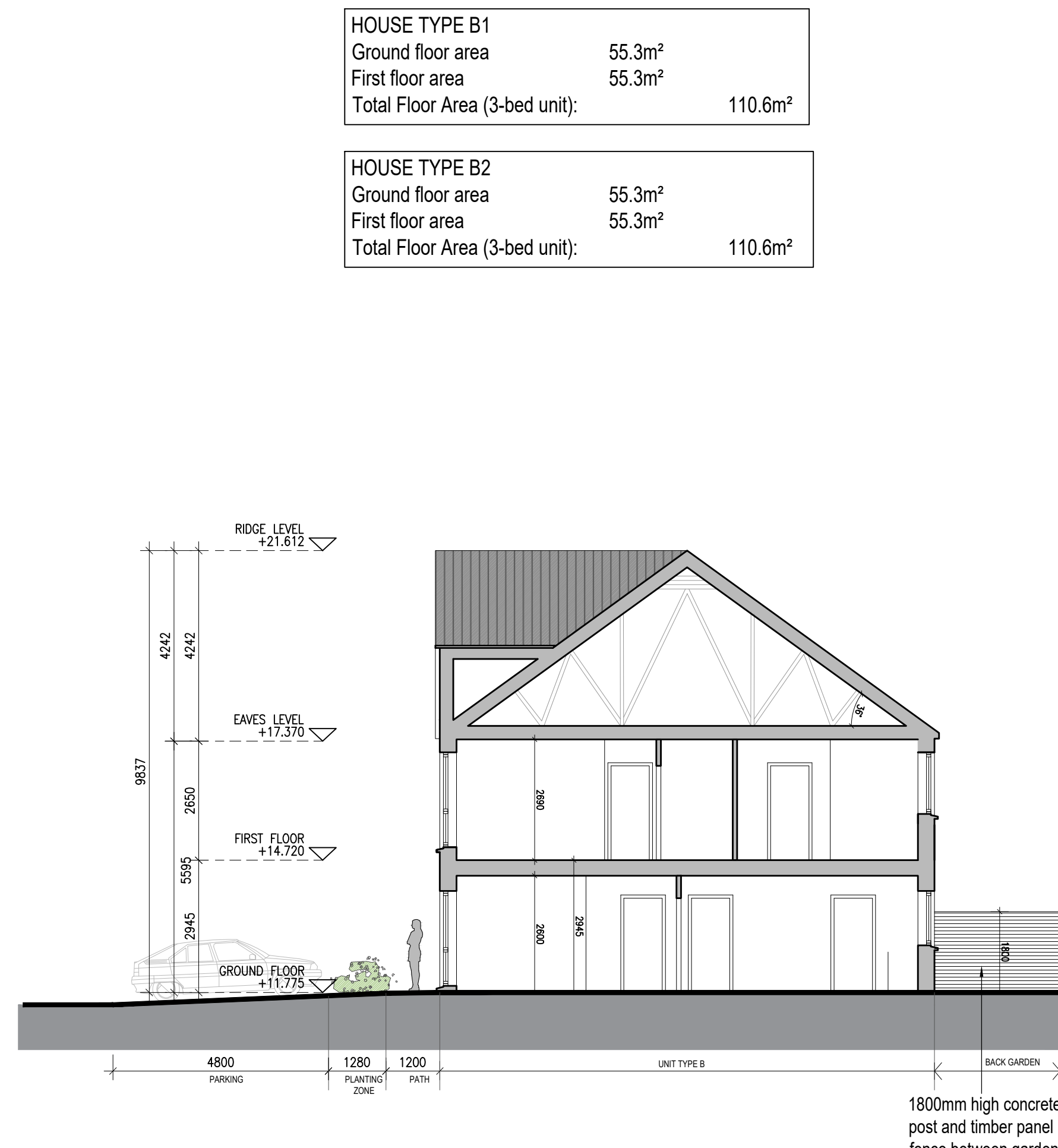


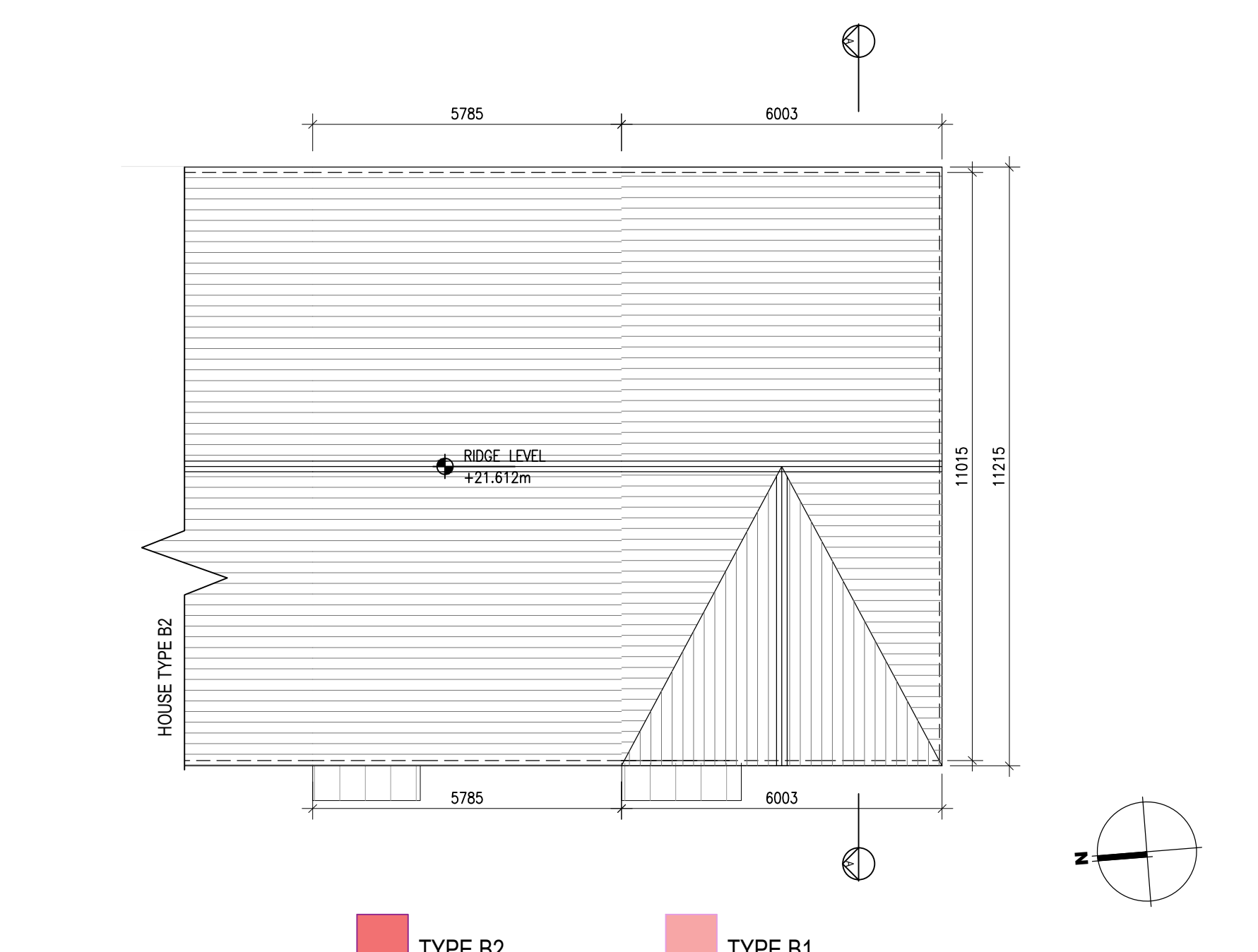
01 Type B1, B2 - Ground Floor Plans - Maynetown  
1:100@A1 3 BED HOUSE



02 Type B1, B2 - First Floor Plans - Maynetown  
1:100@A1 3 BED HOUSE



04 Type B1 - Section - Maynetown  
1:100@A1 3 BED HOUSE

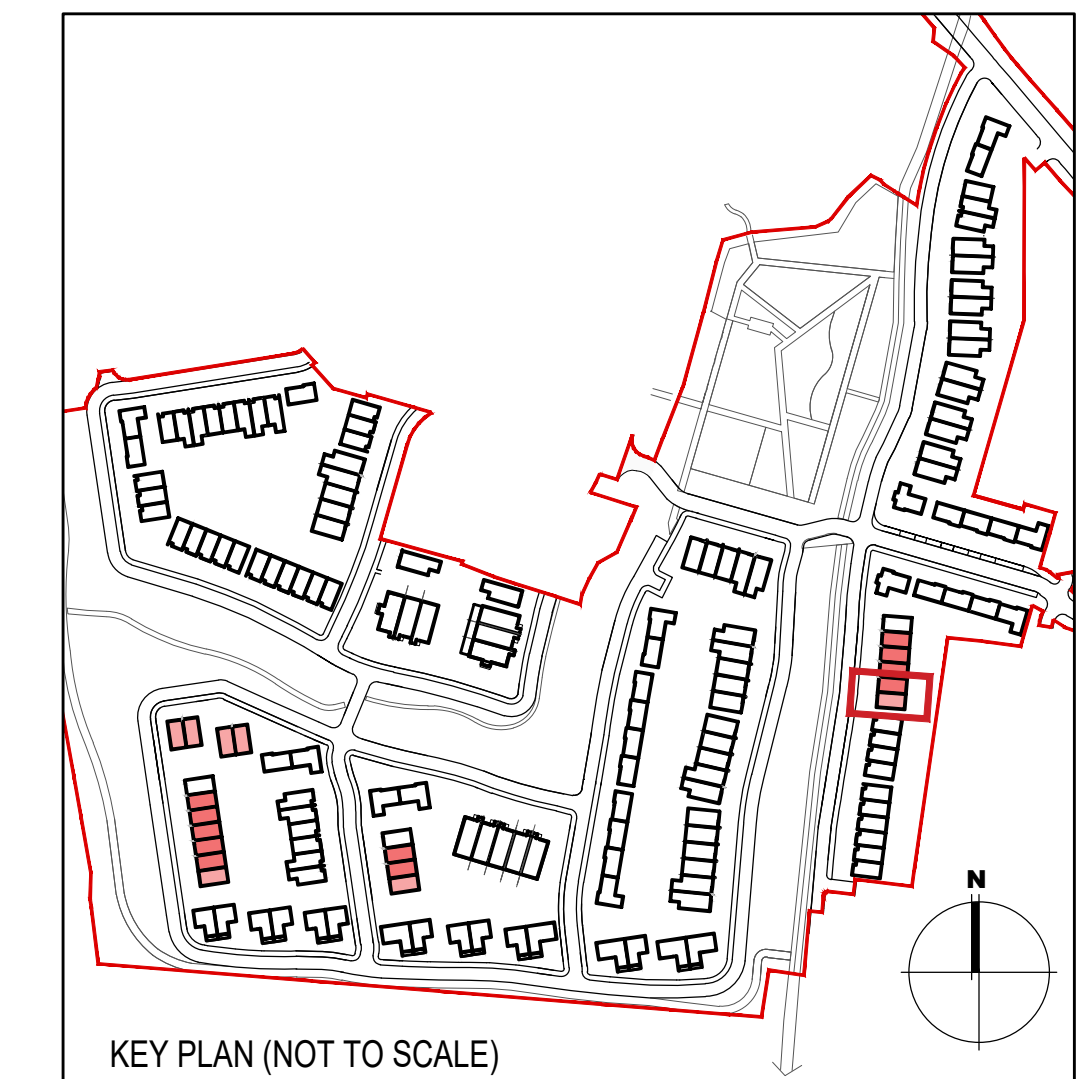


03 Type B1, B2 - Roof Level - Maynetown  
1:100@A1 3 BED HOUSE

HOUSE TYPE B1			
Ground floor area	55.3m <sup>2</sup>		
First floor area	55.3m <sup>2</sup>		
Total Floor Area (3-bed unit):		110.6m <sup>2</sup>	

HOUSE TYPE B2			
Ground floor area	55.3m <sup>2</sup>		
First floor area	55.3m <sup>2</sup>		
Total Floor Area (3-bed unit):		110.6m <sup>2</sup>	



**EXTERNAL FINISHES**

**WALLS:** PAINTED SAND / CEMENT RENDER OR PROPRIETARY PRECOLOURED RENDER FINISH  
SELECTED BRICKWORK WHERE INDICATED ON DRAWINGS

**WINDOWS:** SELECTED PROPRIETARY DOUBLE / TRIPLE GLAZED WINDOW SYSTEM WITH FRAMES TO APPROVED COLOUR  
OBSCURED GLAZING TO BATHROOMS AND EN-SUITES.

**DOORS:** SELECTED PROPRIETARY DOORS AND GLAZED SIDE SCREENS TO APPROVED COLOUR.

**RAINWATER GOODS:** uPVC OR POWDER COATED METAL GUTTERS AND RAINWATER PIPES TO SELECTED COLOUR.

**MAIN ROOF:** CONCRETE ROOF TILES IN SELECTED COLOUR.

**LOW LEVEL PROJECTION:** ZINC CANOPY ROOF TO REAR OF UNITS

**OTHER ITEMS:** uPVC OR POWDER COATED METAL FASCIAS, SOFFITS AND BARGE BOARDS  
PAINTED MILDSTEEL RAILINGS AND BALUSTRADES

HOUSES TYPES	Numbers of units
Type A1/A2/A3 3 bed [ 2st. ] 108.6 sqm	32
Type A4/A5/A6 3 bed [ 2st. ] 117.6 sqm	11
Type B1/B2/B3 3 bed [ 2st. ] 110.6 sqm	22
Type C1 3 bed [ 2st. ] 118 sqm	9
Type C2 3 bed [ 2st. ] 117.4 sqm	8
Type C3 3 bed [ 2st. ] 118.6 sqm	1
Type D1 4 bed [ 2st. ] 141 sqm	9
Type D2 4 bed [ 2st. ] 142 sqm	2
Type F1 4 bed [ 2st. ] 134.4 sqm	11
Type F2 4 bed [ 2st. ] 135.6 sqm	5
Type F3 4 bed [ 2st. ] 146.5 sqm	2
Type F4 4 bed [ 2st. ] 146.4 sqm	5
Type F5 4 bed [ 2st. ] 147.8 sqm	17
Type G 3 bed [ 1.5st. ] 114 sqm	11
Type H 4 bed [ 1.5st. ] 147 sqm	5
<b>DUPLEXES</b>	
Type J1/J2 2 bed Apart. [ 1st. ] 78.5 sqm	9
Type K1/K2 3bed Duplex [ 2st. ] 114.4 sqm	9
Type J3 2 bed Apart. [ 1st. ] 83.5 sqm	2
Type K3 3bed Duplex [ 2st. ] 114.4 sqm	2
<b>Total Residential Units</b>	<b>172</b>

**REFER TO LANDSCAPE ARCHITECT'S DRAWINGS FOR ALL LANDSCAPING DETAILS INCLUDING BOUNDARY TREATMENTS**

**HOUSE TYPE B1, B2 - MAYNETOWN**

Notes	Issue Status	No.	Date	Revision	Initials
1. Copyright Reserved	Progress	01	26.11.2021	SHD PLANNING APPLICATION TO ABP	SH
2. Work to figure dimensions only. Do not scale drawing	Planning Application				
3. The contractor is responsible for checking all levels and dimensions on site and shall refer all discrepancies to the Architect	Fire Cert				
4. Where appropriate, for details of r.c. structure, or mechanical and electrical details, see Engineers drawings	Disability Cert				
5. Proprietary items shall be fixed in strict accordance with manufacturers instructions.	Tender				
6. Sizes of proprietary items shall be checked with manufacturer.	Construction				
7. The contractor shall be responsible for the coordination of structure, finishes and services.	As Built				

Project	Portmarnock South Phase 1D Quintain Developments Ireland Limited	6-7 HARDCOURT TERRACE, DUBLIN 2, IRELAND t: +353-1-878 2400 f: +353-1-878 7386 www.bkd.ie
Drawing Title	House Type B1, B2 - Plans, Section - Maynetown	
Drawing No	6158B-P-064	
Scale	1:100@A1	Rev 01
Drawn	SH	Date 26.11.2021

Standard 6158B-P-064 - Type B1, B2 Plans, Section - Maynetown.dwg 26/11/2021 12:05:04